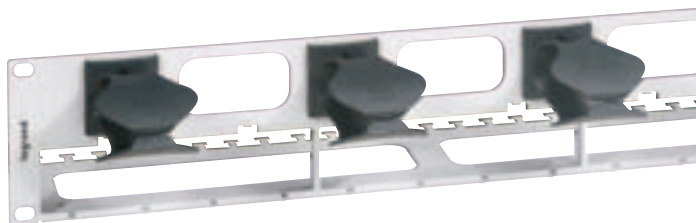




# Guaranteed flexibility

With LCS mixed patch panels you can patch copper and optical fibre cables on the same panel  
 These modular panels provide perfect flexibility for installations



- > Assembled or non-assembled panels, plain or with feedthrough function
- > Mixed: take LCS copper units, LCS optical fibre units, telephone units, TV units, switches, etc.
- > From 1 to 3 U up to 72 RJ 45 connectors
- > 3 versions: STP, FTP, UTP
- > 3 network levels: 10 Giga, cat. 6 and cat. 5e

## LCS Legrand cabling system equipped panels



327 23



327 09

Supplied with screws  
 Tool-less connection  
 Connectors with contact marking using 568 A and B  
 Automatic earthing of each connector to FTP and STP system  
 Supplied with Colring cable ties  
 Conforming to ISO/IEC ed.2, EN 50173-1 and EIA/TIA 568 standards PM 06 test adaptor from Fluke Networks required

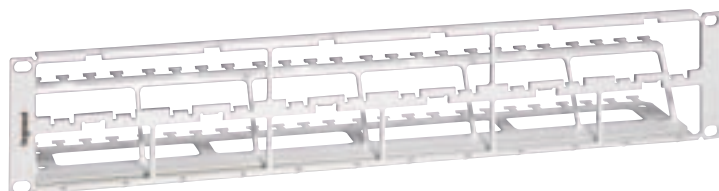
Pack	Cat.Nos	Equipped patch panels
1	327 23	Equipped with 24 RJ 45 connectors <b>10 Giga</b> STP - 1 U - 9 contacts <b>Cat. 6</b> Conform to EIA/TIA 568 B. 2-1 de-embedded tests: interoperable and downward compatible components
1	327 02	STP - 1 U - 9 contacts with folded metal shielding
1	327 01	FTP - 1 U - 9 contacts
1	327 00	UTP - 1 U - 8 contacts <b>Cat. 5e</b> Conform to EIA/TIA 568 B. 2-1 de-embedded tests: interoperable and downward compatible components
1	327 22	STP - 1 U - 9 contacts
1	327 21	FTP - 1 U - 9 contacts
1	327 20	UTP - 1 U - 8 contacts
<b>Equipped panels for telephone networks</b>		
1	327 09	Equipped with 48 RJ 45 connectors <b>UTP</b> Contacts 4-5 / 7-8
1	327 05	<b>UTP for digital network</b> Contacts 3-6 / 4-5

## LCS Legrand cabling system

patch panels to be equipped



327 91



327 92

## LCS Legrand cabling system

units for panels to be equipped



327 35



327 08



327 17



517 41

Pack	Cat.Nos	Patch panels to be equipped
		<p>Panels for self-assembly</p> <p>Empty panels for self-assembly</p> <p>Take fast connection connectors, no tool required:</p> <ul style="list-style-type: none"> <li>• units for patch connection</li> <li>• units for incoming telephone lines</li> <li>• fibre optic units</li> <li>• PoE injectors</li> <li>• units for video system</li> <li>• switch units with 4 and 1 ports</li> <li>• telephone/Ethernet doubling units</li> <li>• copper/fibre optic converter</li> <li>• blanking plates</li> </ul> <p>The panels provide automatic earthing of each connector to FTP and STP system</p> <p>Conforming to EIA/TIA 568 B.2-1 de-embedded tests: interoperable and downward compatible components</p>
		<p><b>With feedthrough panel</b></p>
1	<b>327 93</b>	FTP/STP - 2 U - 24 RJ 45 connectors
1	<b>327 97</b>	FTP/STP - 3 U - 48 RJ 45 connectors
1	<b>327 91</b>	UTP - 2 U - 24 RJ 45 connectors
1	<b>327 95</b>	UTP/STP - 3 U - 48 RJ 45 connectors
		<p><b>Plain</b></p>
1	327 07	FTP/STP - 1 U - 24 RJ 45 connectors
1	<b>327 92</b>	FTP/STP - 2 U - 48 RJ 45 connectors
1	<b>327 96</b>	FTP/STP - 3 U - 72 RJ 45 connectors
1	327 06	UTP - 1 U - 24 RJ 45 connectors
1	<b>327 90</b>	UTP - 2 U - 48 RJ 45 connectors
1	<b>327 94</b>	UTP - 3 U - 72 RJ 45 connectors

NEW

Pack	Cat.Nos	Patch units
3	<b>327 35</b>	<b>10 Giga - 4 RJ 45 connectors</b> STP
3	327 12	<b>Cat. 6 - 4 RJ 45 connectors</b> STP
3	327 11	FTP
3	327 10	UTP
3	327 32	<b>Cat. 5e - 4 RJ 45 connectors</b> STP
3	327 31	FTP
3	327 30	UTP
		<p><b>Telephone units</b></p>
3	327 04	8 RJ 45 connectors 3-6/4-5 contacts
3	327 08	4-5/7-8 contacts
		<p><b>Telephone/Ethernet units</b></p>
1	<b>327 71</b>	4 RJ 45 connectors for telephone/Ethernet for flush-mounting double sockets FTP - 9 contacts
1	<b>327 72</b>	UTP - 8 contacts
		<p><b>Optical fibre units</b></p>
		<p>Clip directly into the optical fibre drawer or into patch panels via the fibre optic cassette (Cat.No 327 26)</p> <p>Supplied with label holder</p>
		<p><b>Singlemode optical fibre units (9/125 µm)</b></p>
1	<b>327 82</b>	SC unit for 4 singlemode fibres
1	<b>327 84</b>	High density LC unit for 6 singlemode fibres
		<p><b>Multimode optical fibre units (62.5 et 50/125 µm)</b></p>
1	327 28	ST unit for 4 multimode fibres
1	327 29	SC unit for 4 multimode fibres
1	<b>327 36</b>	LC unit for 4 multimode fibres
1	<b>327 85</b>	High density LC unit for 6 multimode fibres
		<p><b>Power over Ethernet (PoE) injectors</b></p>
1	<b>327 37</b>	1 input/1 output For supply of one access point Direct connection on the patch panel
1	<b>327 17</b>	2 input/2 outputs For simultaneous supply of 2 access points
		<p><b>Blanking plugs and plates</b></p>
10	<b>517 40</b>	Set of 12 x 1 port blanking plugs - white
10	<b>517 41</b>	Set of 12 x 1 port blanking plugs - black
10	327 25	Blanking plate

NEW