

Sliding Shelf – Heavy duty Type Rack Mount (19" front – 19" rear)



FEATURES

4 fixing points fit at the sides or rear and front 19" mounting angles Vented

COMPLIANCES

UL and cUL

Load Carrying Capacity: 65 kg

Surface Treatment : Fosfat coating

Painting : Ral7035 / Ral9005

STANDARDS

*ISO 9001:2000

*TSE:EN 61587-1 Mechanical Structures For Electronic Equipment - Tests For IEC 60917 And IEC 60297

*Climatic and Environment:EN 61587-1/4.2,IEC60068-2-1 , IEC60068-2-2 , IEC60068-2-30,

*Static Mechanical Load Lifting:EN61587-1/5.2.1

*Static Mechanical Load Stiffness:EN61587-1/5.2.2

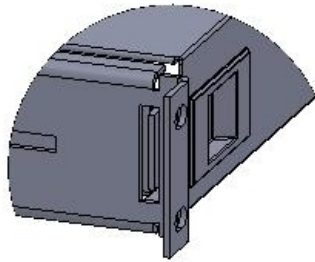
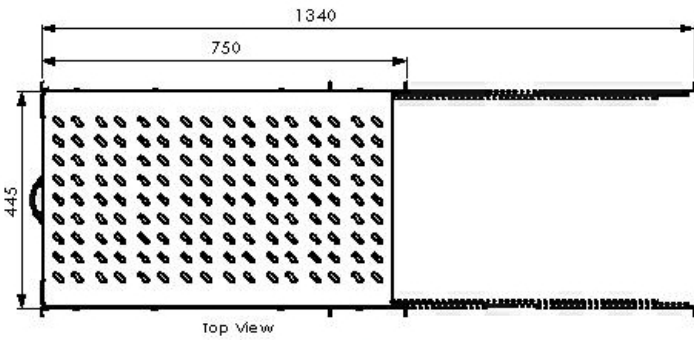
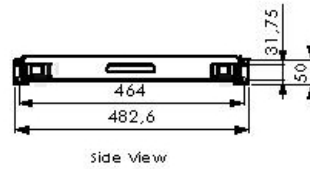
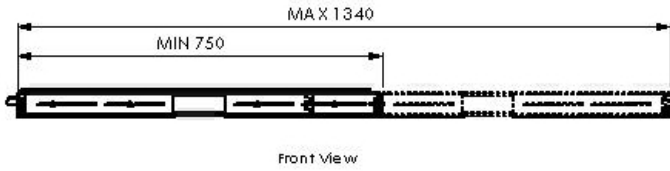
*Dynamic Mechanical Load Vibration and Shock , Impact: EN61587-1/5.3.1,EN61587-1/5.3.3,IEC60068-2-6, IEC60068-2-27,

*Earth Bond:EN61587-1/6.2

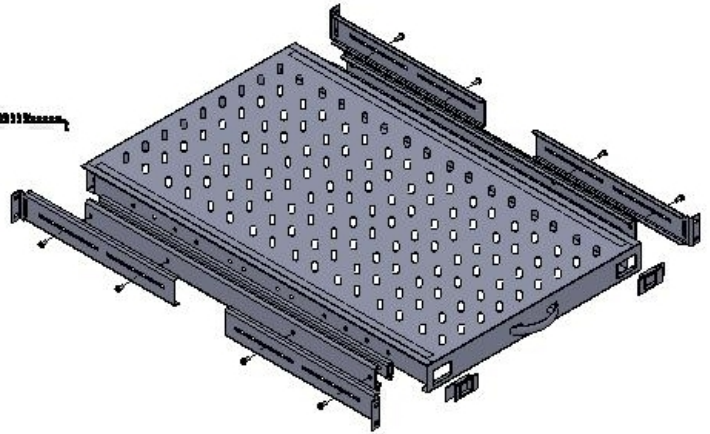
*Flammability:EN61587-1/6.3

Material Definition and Properties , Thicknesses and Shipment Configuration

Part Definition	Material thickness	Material definition & properties	Shipment Configuration
Sliding Shelf	1,20 mm	DIN EN 10130 - 99 EREGLI DC-01 6112 CRS	1ea.
C-rail	1,50 mm	DIN EN 10130 - 99 EREGLI DC-01 6112 CRS	4ea.



LOCK SYSTEM AT SHELF
1:1



Explode View

Sliding Shelf – Heavy Duty

Order No	Product Definition	Dimensions (wxdxh) mm
M55HR720	19" Sliding shelf,vented,heavy duty type complete with rear cable management system,enclosure depth=1000 mm	483x720x50

Shipping Data

Order No	quantity	Shipping Dimension (palette) WxHxD	Net Weight (kg)	Gross Weight (kg)
M55HR720	7	550x440x800	59,346	61,000